

'Copycat Attack'

A pensioner is blaming Jeremy Clarkson, the *Top Gear* presenter, after thugs tipped her three-wheeled Reliant car on its side.

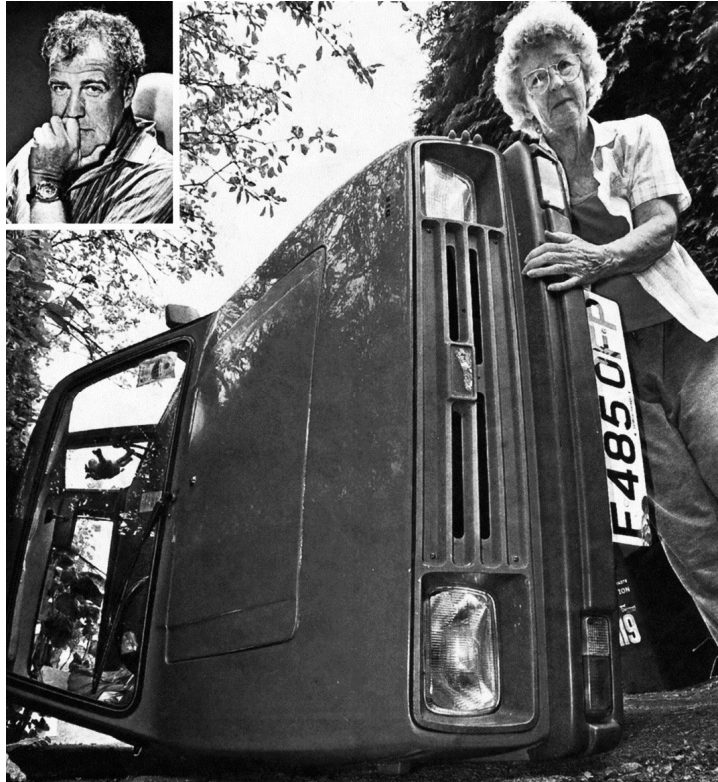
Barbara Wilkes, 67, opened her curtains to see her car leaning against a fence in her driveway.

Mrs Wilkes believes it was a 'copycat' attack after a recent episode of the BBC's *Top Gear* showed Clarkson tipping over a Reliant Robin every time he drove round a corner.

She said: "It's like showing a burglar how easy it is to steal from a house. I feel like sending Clarkson the bill for the damage. I feel he is partly responsible. I'm devastated and heartbroken."

Mrs Wilkes, a retired teaching assistant, of Thurmaston, Leicester, bought her red Reliant Rialto, which replaced the Reliant Robin, in 1988. Earlier this month, Barry Cloughton, 78, of St Austell, Cornwall, claimed vandals who had flipped over his Reliant Robin were copying the same *Top Gear* stunt.

The BBC said: "We do not condone these activities."



The Daily Telegraph, 2010

Tekst 12

- 1p 31 What becomes clear from this text?
Mrs Wilkes thinks BBC presenter Jeremy Clarkson
- A gave a wrong example and promoted bad behaviour.
 - B is responsible for the increase in car thefts.
 - C should not host *Top Gear* anymore.
 - D was wrong to call the Reliant Robin a cheap car.

Bronvermelding

Een opsomming van de in dit examen gebruikte bronnen, zoals teksten en afbeeldingen, is te vinden in het bij dit examen behorende correctievoorschrift, dat na afloop van het examen wordt gepubliceerd.